

Easy-fit

click flooring
with a rigid
core



Loose lay

Easy fit, rigid core

0.55 mm wear layer

This is Amtico Click Smart

No-mess click flooring perfect for quick turnaround projects.

Click Smart is Amtico's loose lay rigid core LVT with integrated underlay.

It has the same flooring qualities that you expect from Amtico, but its adhesive-free application makes it quicker and easier to install.

Click Smart features the latest rigid core technology making it stronger and more resistant to expansion and contraction. It's suitable for light commercial and residential applications.

Specify Amtico LVT for:



Lasting appearance



Low maintenance



Easy cleaning

29

Products

0.55mm

Wear layer

10

Year light commercial warranty

3

IRE Wood designs for a natural finish

6

Parquet designs

Parquet

Timeless and classic, we've now added six parquet options to the Click Smart collection, bringing even more design flexibility to our loose lay offering.

Each product has been carefully selected for its authentic tones and wood grains which enhance the effect of this enduring laying pattern.



Scandi Oak - Parquet CP05



Planks:
114.3 x 609.6 mm (4.5 x 24")



Beachcomber Oak

CP06



Hushed Oak

CP04



Scandi Oak

CP05



Linden Oak

CP02



Nordic Oak

CP01



Smouldered Oak

CP03



View our installation video on our website



The beauty of natural wood is undeniable, however commercial demands require a product that combines both performance and charm.

We have captured the detail of real wood, with the quality of performance and ease of installation you expect from Amtico LVT.

An In-Register Emboss follows the wood grain, creating a natural effect realistic to the eye and underfoot. The tones and colour variation from nature are designed into this LVT, hiding the effects of traffic and bringing visual movement across a space.



Crest Oak - Stripwood



Crest Oak

■ SB5W3076



Linden Oak

☒ SB5W3010



Honey Oak

SB5W2504



Summer Oak

SB5W3012



Voyage Oak

■ SB5W3077



Beachcomber Oak

SB5W3087



Worn Ash

SB5W2539



White Ash

SB5W2540



Treated Oak

SB5W3011



Clement Oak

SB5W3086



Sun Bleached Oak

SB5W2531



Nordic Oak

SB5W2550



Featured Oak

SB5W2533



Weathered Oak

SB5W2524



Dry Cedar

SB5W2535



Hushed oak - Parquet CP04

Wood



IRE



Available
in Parquet

11



Nimbus Oak

■ SB5W3075



Scandi Oak

☑ SB5W3085



Hushed Oak

☑ SB5W3084



Smouldered Oak

☑ SB5W3083



Chapel Oak

SB5W3014



Ceramic Frost SB5S6100



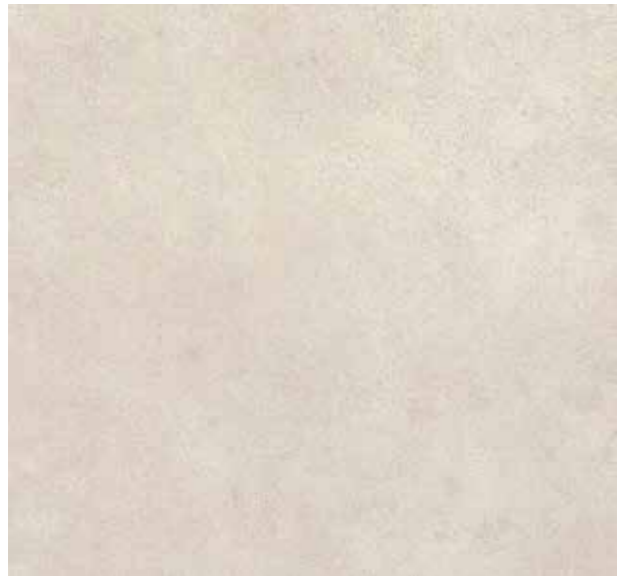
Pale Limestone SB5S2794



Portland SB5S2791



Metropolis Smoke SB5S2627



Dappled Concrete SB5S2793



Lyme SB5S2789



Bay SB5S2792



Studland SB5S2790



Linear Stone Shale SB5S3606

Burgenheimat Apartments

Location: Rhens, Germany
Sector: H&L
Products & Laying Pattern:
Weathered Oak, laid Stripwood

The recently renovated Burgenheimat Apartments are situated in the historical village of Rhens, Germany, in a busy tourist area.



The subtle, natural tones of Weathered Oak create a versatile backdrop for these apartment renovations.

Amtico Click Smart's rigid core, adhesive-free technology is ideal for spaces that need quick turnaround refurbishment – more than 400 sqm were laid quickly and easily over the existing hard floors in this project.

The high performance integrated underlay also ensures improved acoustics, helping to create a sense of calm and tranquility in these modern, cosy apartments.

For more Amtico projects visit [amtico.com/commercial/inspiration](https://www.amtico.com/commercial/inspiration)



Product Availability

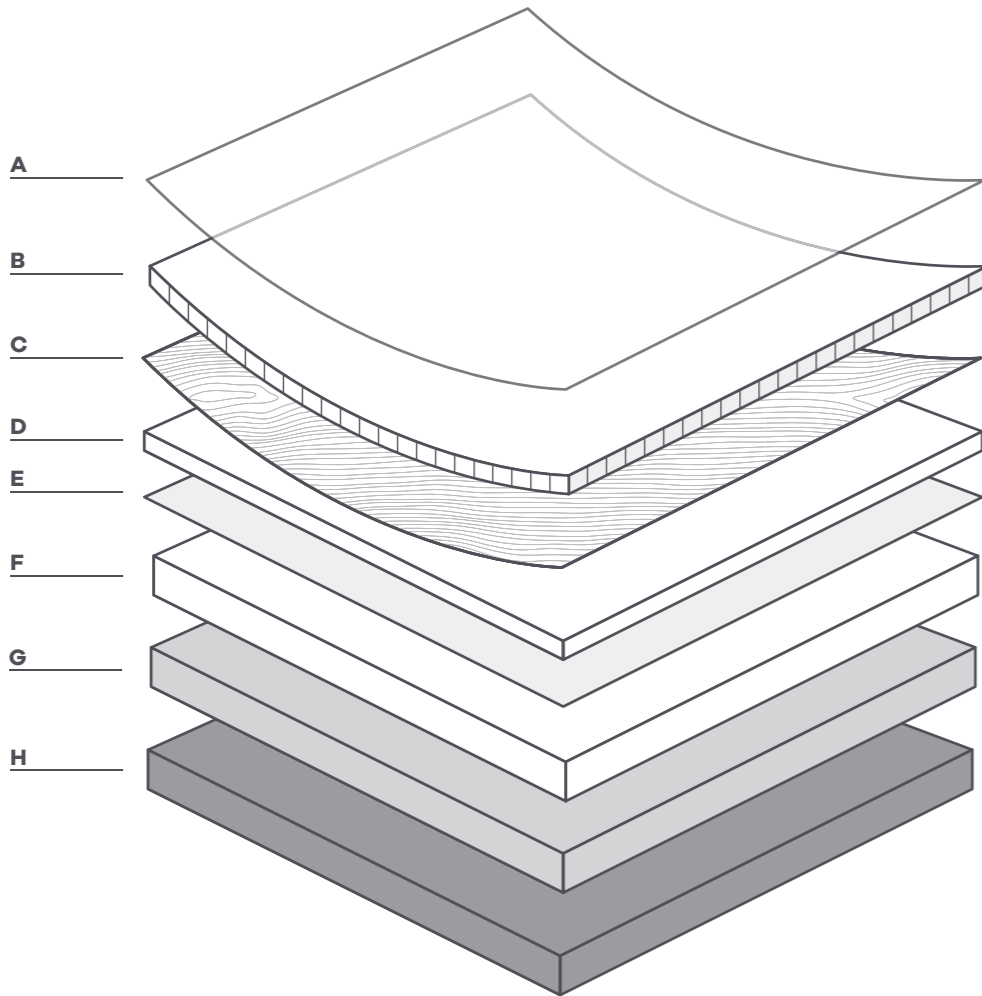
Product Name	Product Code	Surface Finish	LRV - Y Value	Straight Grain			
				178.1 x 1244.6mm (7 x 49")	178.1 x 1211.2mm (7 x 47.7")	303.1 x 607.2mm (11.9 x 23.9")	Parquet: 114.3 x 609.6mm (4.5 x 24")
Beachcomber Oak	SB5W3087	Barnwood	50	•			•
Chapel Oak	SB5W3014	Barnwood	13	•			
Clement Oak	SB5W3086	Barnwood	43	•			
Crest Oak	SB5W3076	IRE	23		•		
Dry Cedar	SB5W2535	Barnwood	26	•			
Featured Oak	SB5W2533	Tick	30	•			
Honey Oak	SB5W2504	Tick	32	•			
Hushed Oak	SB5W3084	Tick	38	•			•
Linden Oak	SB5W3010	Tick	27	•			•
Nimbus Oak	SB5W3075	IRE	35		•		
Nordic Oak	SB5W2550	Tick	27	•			•
Scandi Oak	SB5W3085	Barnwood	40	•			•
Smouldered Oak	SB5W3083	Tick	18	•			•
Summer Oak	SB5W3012	Tick	24	•			
Sun Bleached Oak	SB5W2531	Barnwood	32	•			
Treated Oak	SB5W3011	Tick	31	•			
Voyage Oak	SB5W3077	IRE	19		•		
Weathered Oak	SB5W2524	Barnwood	28	•			
White Ash	SB5W2540	Barnwood	50	•			
Worn Ash	SB5W2539	Barnwood	44	•			
Bay	SB5S2792	Ceramic	18			•	
Ceramic Frost	SB5S6100	Deep Ceramic	63			•	
Dappled Concrete	SB5S2793	Ceramic	50			•	
Linear Stone Shale	SB5S3606	Ceramic	36			•	
Lyme	SB5S2789	Ceramic	44			•	
Metropolis Smoke	SB5S2627	Ceramic	21			•	
Pale Limestone	SB5S2794	Ceramic	53			•	
Portland	SB5S2791	Ceramic	31			•	
Studland	SB5S2790	Ceramic	30			•	

All products are urethane coated and bevelled as standard. Please note all sizes and availability are correct at the time of press. Please contact your local Amtico Sales Representative for the latest information.

Packaging Information

	178.1 x 1244.6 mm (7 x 49")	178.1 x 1211.2 mm (7 x 47.7")	303.1 x 607.2 mm (11.9 x 23.9")	Parquet: 114.3 x 609.6 mm (4.5 x 24")
Plank/Tile per Box	8	8	9	20
m ² per Box	1.77	1.76	1.66	1.39
Weight (kg) per Box	17.83	17.44	16.75	14.09
Boxes per Pallet	50	50	54	64
m ² per Pallet	88.50	86.50	89.64	88.96
Weight (kg) per Pallet	891.50	872	904.50	901.76

Visit amtico.com for more information on our product range, inspiring ideas, maintenance and installation advice. Every effort is made to achieve accurate reproduction of products in this brochure, however printing limitations can be misleading. Selection of products should be made from actual samples. Samples are small pieces cut from standard tiles. They give only a general indication of the design. Tone and shading can vary slightly from batch to batch and it is not possible to guarantee that the sample will exactly match the material supplied. The policy of the Company is one of continuous development and improvement and the right is reserved to add or delete from the range or change patterns without prior notification. All products are manufactured in line with EN 1651.



A. Urethane Coating

B. High Density 0.55mm Wear Layer

Gives excellent impact resistance and high clarity, allowing the product designs to shine through.

C. Design layers

Carefully crafted print films create the distinctive Amtico Wood, Stone and Abstract product designs.

D. Core Layer

Contains up to 20% recycled pre-consumer content.

E. Fibreglass Reinforcement Layer

For reduced coefficient of thermal expansion and improved dimensional stability.

F. Rigid Core Layer

Contains profile for high locking strength and up to 20% recycled pre-consumer content.

G. Backing Layer

The foundation of the product which provides long lasting stability.

H. Acoustic backing layer / underlay

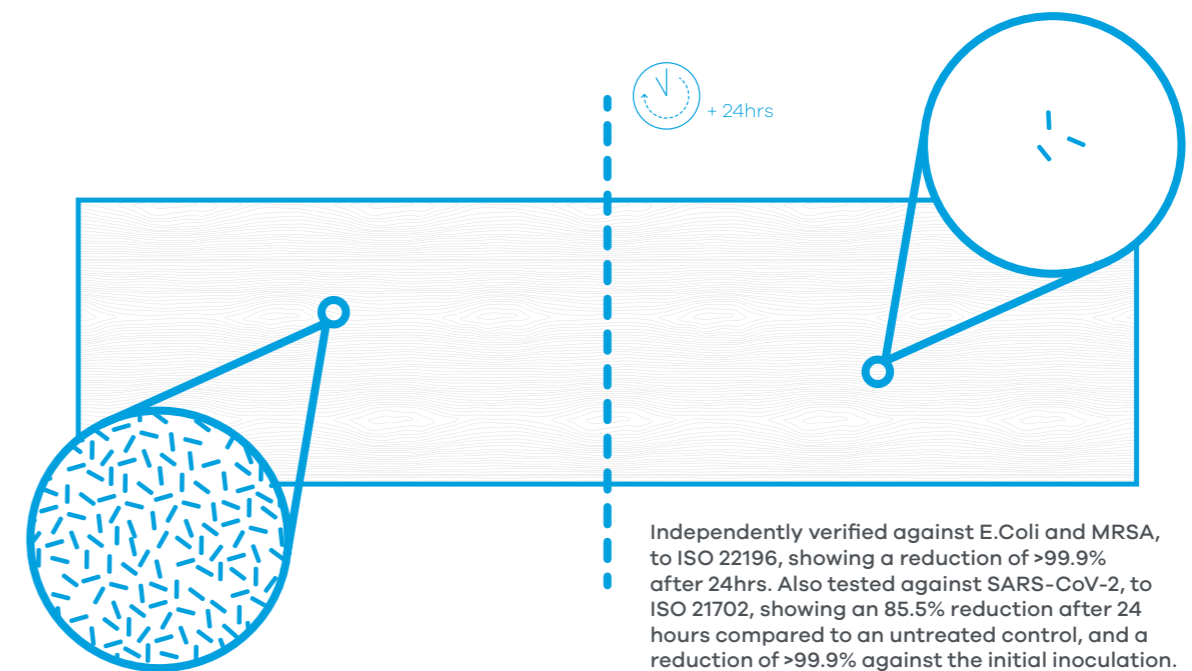
Reduces the impact sound insulation by up to 20dB and provides an extra level of comfort underfoot.

Amtico Click Smart products are specified as standard with integral antimicrobial protection.

We add an ionic silver additive to the urethane coating that provides a hygienic surface where bacteria and viruses will struggle to multiply or survive.

Embedded antimicrobials are not designed to replace cleaning and disinfection, but to provide an additional level of protection between regular cleaning cycles in high traffic spaces.

Under independent tests this additive in our product has been proven to reduce bacteria growth by >99.9% over 24 hours when compared with an identical control without the additive. All our antimicrobial flooring achieves the same levels of high performance against sunlight, scuffs and stains and heavy traffic that you expect from any Amtico floor.



Independently verified against E.Coli and MRSA, to ISO 22196, showing a reduction of >99.9% after 24hrs. Also tested against SARS-CoV-2, to ISO 21702, showing an 85.5% reduction after 24 hours compared to an untreated control, and a reduction of >99.9% against the initial inoculation.



"If extra levels of hygiene are needed, it's reassuring to know this floor is tested and proven to provide it."

John Baggaley
Technical Specialist

	<p>The CE mark is a confirmation by Amtico that our products are in compliance with European health, safety and environmental requirements (as required by Council Directive 89/106/EEC and detailed in EN 14041).</p>		<p>The UKCA mark is a confirmation by Amtico that our products meet the UK Regulations as defined in the relevant Statutory Instruments (SIs).</p>
	<p>Amtico is a member of the professional association for flexible floor covering manufacturers in Germany.</p>		<p>Amtico International GmbH is a member of the DGNB German Sustainable Building Council.</p>
	<p>Our quality system complies with BS EN ISO 9001 and is certified by LRQA.</p>		<p>Recognised around the globe, our BSI accreditation represents the latest and highest standard of environmental impact awareness, operational control and use of materials.</p>
	<p>Amtico Click Smart products are third party certified for low-VOC emissions contributing towards good indoor air quality.</p>		<p>SOL PVC Pro is the French professional organisation of PVC flooring manufacturers; standing for their shared values and commitments related to environment, comfort, regulation and communication. Amtico International partenaire de Sols Pvc^{PRO}</p>
	<p>Amtico Click Smart products are manufactured using ortho-phthalate free plasticisers except for recycled content.</p>		<p>Amtico Click Smart complies with Indoor Air Comfort Gold version 6.0 and is certified as a low emissions product contributing to a healthy indoor environment.</p>
	<p>Amtico Click Smart has been certified to achieve the M1 building materials emissions classification for indoor air quality from the Finnish Information Foundation RTS.</p>		<p>Amtico International is a member of the European Resilient Flooring Manufacturers' Institute.</p>



10 Year light commercial warranty

All Amtico Click Smart products come with an Amtico light commercial product warranty against wear-out. For full details, visit amtico.com



View our Installation and Maintenance Guidelines on our website



Amtico UK & European Sales

Solar Park Southside
Solihull, West Midlands
B90 4SH, UK
+44 (0) 121 745 0800
samples@amtico.com

Amtico Head Office

Kingfield Road
Coventry
CV6 5AA, UK
+44 (0) 24 7686 1400
samples@amtico.com

Amtico International Germany

Grand Bateau
Hammer Straße 17
40219 Düsseldorf
+49 (0) 211 361 155 0
info@amtico.de

Amtico International France

36 Avenue Hoche
75008 Paris, France
+33 (0) 1 55 38 95 70
info@amtico.fr

Amtico International Scandinavia

S:t Olofsgatan 11A
753 21 Uppsala
Sweden
+46 (0) 8 584 233 24
info@amtico.se

Amtico International Sucursal En España

Calle Boix Y Morer 6, 2 Derecha
28003 Madrid, Spain
+34 (0) 91 335 24 94
info@amtico.es

Amtico International Asia

Room 905
9/F., OfficePlus @ Wan Chai
303 Hennessy Road, HK
+852 2327 7703
samples@amtico.com

Amtico International Middle East, Africa & India

8th Floor
Building Number 2
J&G DMCC, Dubai, UAE
+971 (0) 50 192 33 46
samples@amtico.com

Amtico International Pty Ltd Australia & New Zealand

Unit 1, 40 Mill Street,
Yarrabilba 4207
Australia
australia.customerservice@amtico.com

amtico
flooring